

SPECIFICATIONS:

*PORT: 2-1/2"

*MATERIALS:

BODY: 304 SST, ELECTROPOLISHED

BELLOWS: WELDED AM-350 SST

BONNET SEAL: VITON

POPPET SEAL: VITON

OTHER MATERIALS AVAILABLE

ACTUATION: SELF-LUBRICATING BRONZE NUTS

WITH ACME THREADS

DIFFERENTIAL PRESSURE: MAXIMUM 20 PSIA ACROSS VALVE SEAT

MAXIMUM TEMPERATURE VITON SEALS:

SUSTAINED: $\leq 150^{\circ}\text{C}$ [302°F]

INTERMITTENT: $\leq 204^{\circ}\text{C}$ [399°F]

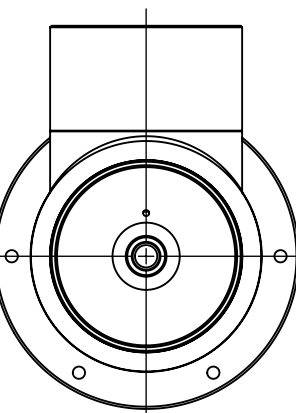
VACUUM RANGE: VITON BONNET SEAL: $\geq 1 \times 10^{-9}$ TORR HIGH VACUUM

OPTIONS: FITTINGS AND O-RINGS

NOTES:

1. ALL WELDS TO BE VAC. TIGHT TO 2×10^{-10} MIN. SENSITIVITY.

2. DIMENSIONS IN [X.XX] ARE IN mm.



PROPRIETARY AND CONFIDENTIAL
THE INFORMATION CONTAINED IN THIS
DRAWING IS THE SOLE PROPERTY OF
THERMIONICS LABORATORY INC. ANY
REPRODUCTION IN PART OR AS A WHOLE
WITHOUT THE WRITTEN PERMISSION OF
THERMIONICS LABORATORY INC. IS
PROHIBITED.

DIMENSIONS ARE IN INCHES TOLERANCES: FRACTIONAL \pm N/A ANGULAR: MACH \pm BEND $\pm 5^{\circ}$ ONE PLACE DECIMAL $\pm .1$ TWO PLACE DECIMAL $\pm .01$ THREE PLACE DECIMAL $\pm .005$ SURFACE FINISH 63 R.M.S.		FINISH:				DO NOT SCALE DRAWING		REVISION
DESIGN/ENG.		NAME	SIGNATURE	DATE	USED ON	NEXT ASSY.	thermionics laboratory inc. Hayward Ca. 94545	
CHK'D						GEN. USE		
APPV'D								
MFG								
Q.A							ANGLE VALVE, RIGHT ANGLE, MANUAL ACTUATION	
							DWG NO. A-250-H	
							A3	
							SCALE: 1:2.5	
							SHEET 1 OF 1	